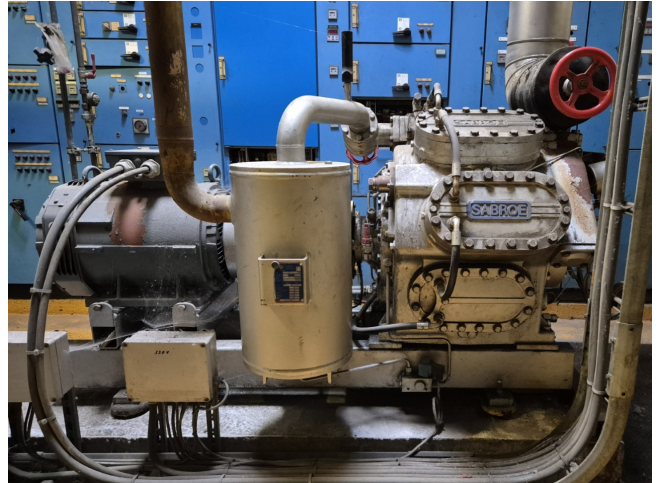


Sabroe SMC 108 L

Specifications

Marque	Sabroe
Le type	SMC 108 L
Réfrigérant	NH 3 (ammonia)
Électromoteur Specs	50/60 Hz - 37/42,5 kW - 1460/1760 RPM
Démarrage à vide	✓
Contrôle de capacité	✓
Sur le châssis en acier	✓
Interrupteurs de sécurité de pression	✓
Manomètres	✓
Séparateur d'huile	✓
Voyant	✓
m ³ / h	565
Remarques	Y.o.b. 2001
Stock	1



Description

Used Sabroe SMC 108 L

Used Sabroe SMC 108 L reciprocating compressor on R717 (Ammonia). Complete with a Schorch KN7200M-BB01B-401 electric motor - 50/60 Hz - 37/42,5 kW - 1460/1760 RPM, oil separator, pressure and safety switches/gauges. The compressor has a displacement of 565 m³/h.

*Why choose for HOSBV? Were not only the largest used refrigeration specialist in Europe, but also, we deliver all equipment including an extensive test, warranty and industrial cleaning.

*Optional we can also perform a new paint job and arrange the logistics.

